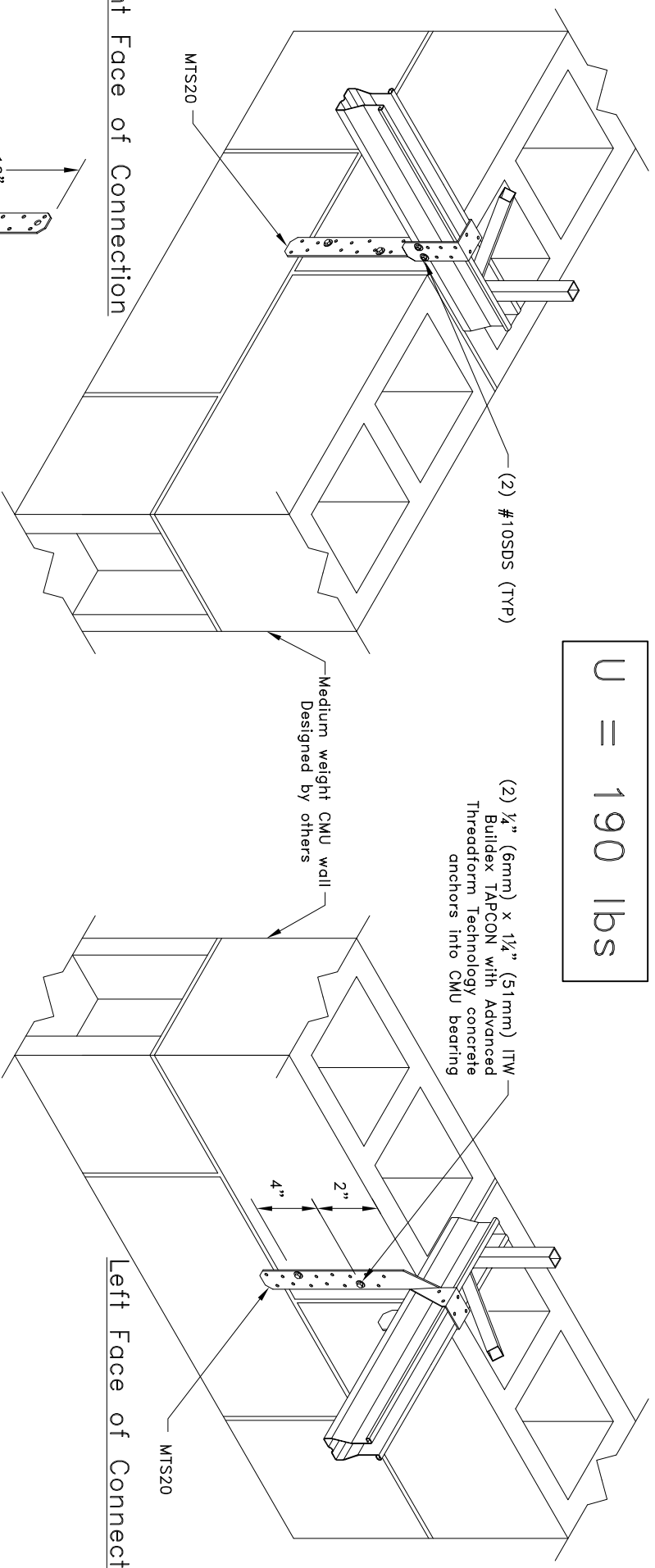


U = 190 lbs

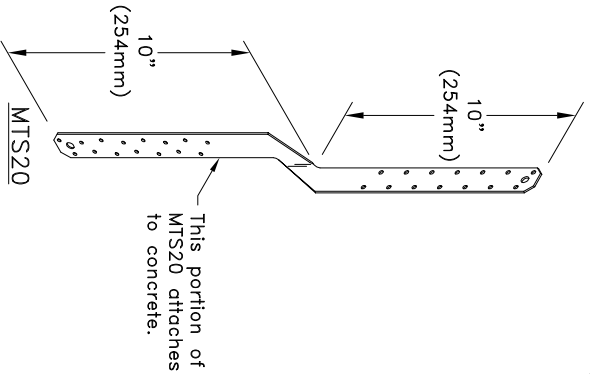


Right Face of Connection

Left Face of Connection

General Notes:

1. SDS = self-drilling tapping screw. SDS minimum end distance is  $\frac{3}{8}$ ", and minimum spacing is  $\frac{3}{8}$ ".
2. TAPCON concrete anchor spacing is 4" (102mm) minimum. Minimum distance to edge/end of wall is 2". Tapcons must not be placed closer than 1" to mortar line.
3. Special inspection is required. Refer to ESR-1671 regarding proper installation of anchor and requirements for special inspection.
4. Concrete anchor is not to be installed until concrete has reached the specified design strength.
5. Truss shall be designed with at least one vertical web over the bearing.
6. MTS20 must be installed so it wraps over the bottom chord of the truss and returns down the back side of the bottom chord as shown in detail above.
7. Per ESR-1671, the design value given above is for uncracked concrete only.
8. The allowable loads outlined in this detail have not been increased by 1.33.



This portion of  
MTS20 attaches  
to concrete.

**TrusSteel®**  
An ITW Company

[www.TrusSteel.com](http://www.TrusSteel.com)

Florida: 1950 Marley Drive / Haines City, FL 33844 / (800) 755-6001  
Missouri: 13389 Lakefront Drive / Earth City, MO 63045 / (800) 326-4102  
California: 8351 Rovana Circle / Sacramento, CA 95828 / (800) 877-3678

**Simpson MTS20 Uplift  
Attachment Over Bottom Chord  
of Truss Into CMU Face**

ITW Building Components Group, Inc. shall not be responsible for any performance failure in a connection due to a deviation from this detail. Any variation from this detail shall be approved in advance by ITW Building Components Group, Inc.

**Custom Detail:**

TS-CD-TB-MA1-001

**Date:**

01/11/10

**Custom Detail:**

Truss-To-Bearing: Concrete